

## Missions Week Schedule

### Sunday, Oct 13

8:30 & 10:50 am—Sanctuary  
Thad & Nikki Roller, FMWM

9:40 am—Building B  
Seminars for Adults & Teens

6:00 pm—Sanctuary  
Thad & Nikki Roller, FMWM

### Wednesday, Oct 16

7:00 pm—Bldg. B (B200-201)  
Thad & Nikki Roller, FMWM

### Saturday, Oct 19

8:00 am—Building C  
Men's Breakfast (All Ages)  
Dan Owsley, FMWM

10:30 am—Building C  
Ladies' Mug-n-Muffin (All Ages)  
Hope Owsley, FMWM

### Sunday, Oct 20

8:30 & 10:50 am—Sanctuary  
Dan & Hope Owsley, FMWM

9:40 am—Building B  
Seminars for Adults & Teens

6:00 pm—Building C  
International Potluck  
Special Offering for appliances in  
Owsleys' new home in São Paulo.

Please bring an international main dish and a salad, vegetable, or dessert. Remember that American favorites are also international dishes. You are encouraged to wear international attire, if possible.

## Local Missions

We are called to participate in intentional personal and corporate outreach efforts within our national borders and especially within our local community. We have sensed a call of God to be of help to those in need in central Kentucky. Our church family's desire is to provide help in deliberate, purposeful, holistic and healthy ways directly or indirectly through established local ministry organizations. When we help others, we are helping Him. That's His call to us as individuals and as a church family.



## Global Missions

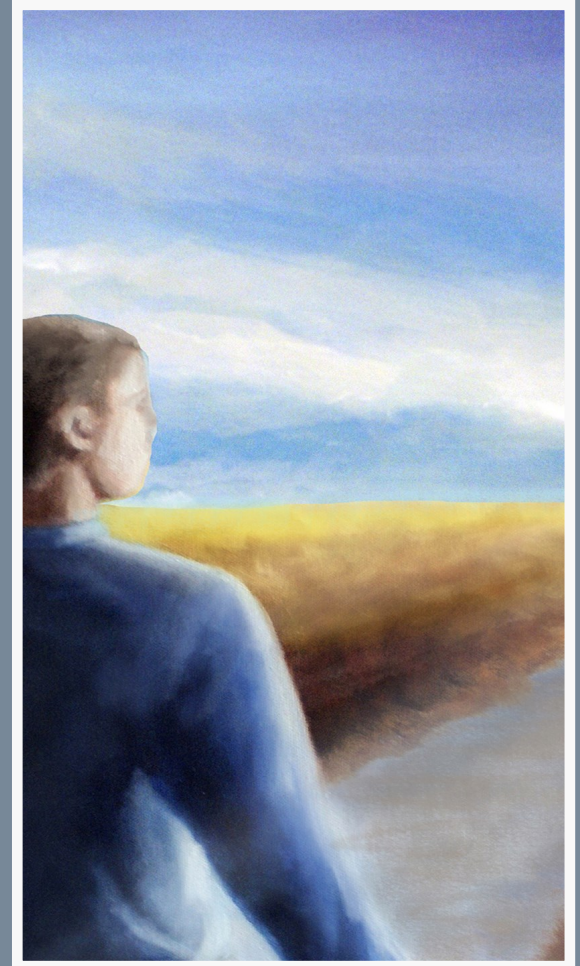
In response to what Christ has done for us and his command in Matthew 28:18-20, we are both obligated and honored to "go and make disciples of all nations." The World Missions team focuses on ministries beyond our country's borders. We work to educate the members of our congregation about our missionaries, their work, and their needs. Our goal is to challenge them to engage in world ministry by providing financial and prayer support to our missionaries, by volunteering to serve on mission teams, and by considering whether God may be calling them into full-time missions.

### Wilmore Free Methodist Church

A community that reflects  
Jesus' vision and values.

1200 Lexington Ave., Wilmore, KY 40390  
Phone: 859-858-3512, Fax: 859-858-8047  
E-mail: [office@wfmc.net](mailto:office@wfmc.net)

# "Here Am I, Send Me."



## Missions Week

— October 13-20, 2019 —

### Missionary Speakers:

*Thad & Nikki Roller Oct 13*

*Dan & Hope Owsley Oct 20*



**Thad and Nikki Roller** have been appointed to the capital city of Bogotá, Colombia. They will facilitate the ministry of the Colombian FMC and provide support to its leaders. Their initial assignments include championing the Beehive Girls Home and helping it to become self-sustaining while also learning about the Community Church Planting strategy and supporting its implementation in the Colombian context.



**Dan and Hope Owsley** have served in Brazil for 31 years, starting churches and organizing conferences, teaching, and mentoring. Recently Hope edited a book of John Wesley's writings in Portuguese. After seven years in Brasilia, they will move to São Paulo in February to work with the Free Methodist Bible Seminary and to encourage nation-church planting.

**Colombia Trip:** Wilmore FMC is planning a short-term mission trip to Colombia next spring break during which team members will work with the Rollers. For more information, be sure to attend the Colombia trip seminar offered during the Sunday School hour on Oct 13 and again on Oct 20.

## Supporting Home and World Missions Financially

The home and world mission outreach ministries of the Wilmore Free Methodist Church are funded through designated offerings. To help support these mission programs, the church has implemented a matching funds program. For each dollar received in designated offerings, the church contributes an additional 75 cents from the general budget. For example, if you contribute \$100 a month to missions, the church will contribute an additional \$75 from the general budget. In effect, your \$100 gift becomes a \$175 investment in mission outreach. Please consider becoming a regular contributor to the missions programs of the church. Just indicate "Missions" and the amount of your contribution in the memo section of your check or on your envelope.

### Home Mission Budget

Assurance for Life	3,000
All God's Children	720
Community Center	1,200
Eagle Ridge Retreat Center	2,400
FAS/Jerry Coleman	2,400
FM Chaplain Support	600
Food for Kids	4,200
Friendship International	1,200
Intervarsity Christian Fellowship	720
Jessamine Homeless Shelter	1,200
Kaleb Phillips	600
Kentucky Refugee Ministry	1,200
Kentucky Refuge for Women	600
Lexington Rescue Mission	900
Natalie's Sisters	600
New Hope International	1,200
Oakdale Christian Academy	4,800
SCORE International	1,200
Wilmore Good News Club	300
Discretionary Mission Action	600

### World Mission Budget

#### Free Methodist World Missions

Angelo, Eduardo & Cindi	9,288
Creative Access Country	16,296
Gomez, Ricardo & Beth	17,700
Hdqtrs Operating Budget	1,536
India Country Support	4,860
Land, Darin & Jill	6,048
Owsley, Dan & Hope	7,260
Philippines Care Center	3,300
Reynen, Mike & Vickie	7,056
Roller, Thad & Nikki	4,800

#### Evangelism Resources

#### One Mission Society

Moscow Seminary	1,368
Tonglamun, Golf & Bethany (Ury)	2,400
Weaver, Brent & Colleen (Fitch)	2,736

#### Mission Quest

Hersey, Steve & Ruth	3,600
----------------------	-------

#### GEM

Neal, Josh & Rachelle	1,200
-----------------------	-------

#### World Gospel Mission

Bowen, Andy & Lizet	7,320
Searls, Dan & Katy Beth	3,600
Steury, Jon & Vera	4,200

#### Foreign Mission Trips

	37,200
--	--------

Discretionary Mission Action	10,625
------------------------------	--------

Total 29,640

Total 153,953